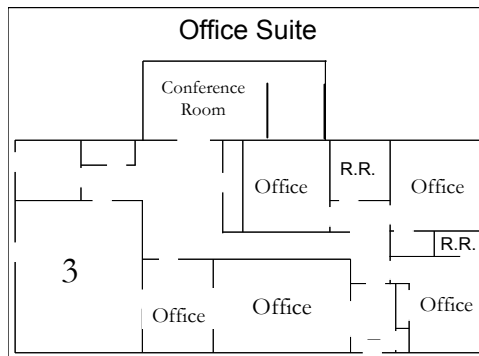
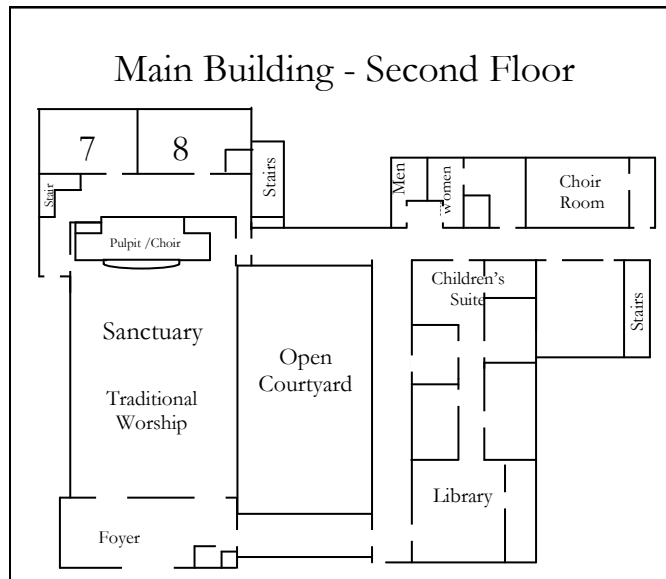
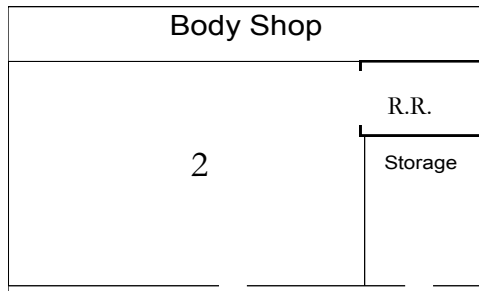
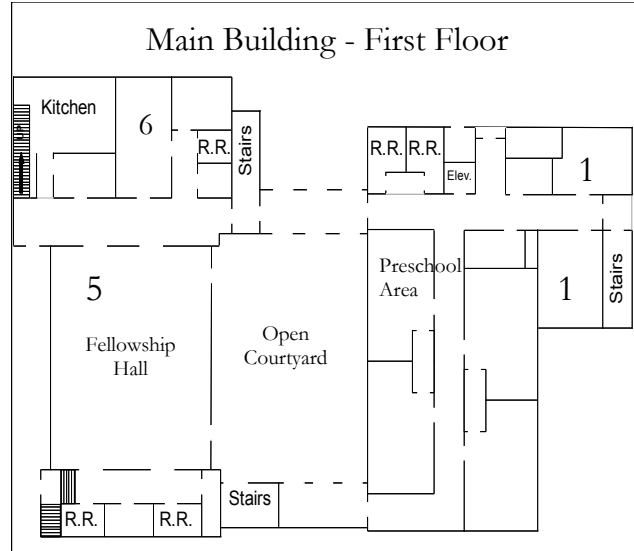
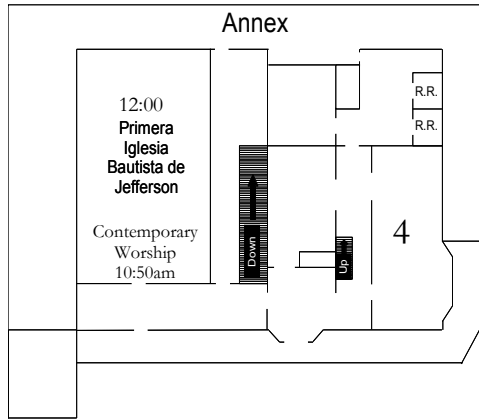


## First Baptist Church Adult Sunday School Classes

<u>Class</u>	<u>Age/Demographics</u>	<u>Curriculum</u>	<u>Class Contact</u>	<u>Missions Involvement</u>	<u>Social Activities</u>	<u>What Class Members Say about this Class</u>
<b>Open Door</b>	30-50 (Couples, Singles)	Faith Element	Wesley Johnson 706-340-4032 wesleyjohnson77@yahoo.com	Food Pantry; homeless shelter meals	Sporting events; cookouts; movies	<i>"All are welcome"</i> <i>"Come as you are"</i>
<b>24:15</b> (Joshua)	35-55 (Couples and Singles; parents of teenagers and college students)	Formations (Smyth & Helwys); other short-term studies	Steven Hix 770-539-2168; sdh4au@gmail.com	Turkey Can Run; Meals on Wheels; The ARK; Meals for JHS Football team	Annual Christmas Party; Rook Tournaments; parties	<i>"Our class talks about relevant issues"</i> <i>"Everyone is in a similar stage in life, so we can relate to each other"</i> <i>"We like to have fun"</i>
<b>Adult I</b>	20's-40's (College & Career; Married with children)	Faith Element	Traci Bledsoe 678-227-8417 traciloar@gmail.com	Adopt family at Christmas; Food Pantry; Turkey Can Run; Meals on Wheels; Individual benevolence	Progressive Dinners; Christmas Parties; seasonal parties; desire to do more social activities together	<i>"There is a wide mix of personalities in this class"</i> <i>"We are all friends"</i> <i>"We are there for each other, meeting each other's needs and praying for one another"</i>
<b>Adult II</b>	40's – 80's (Couples and Singles)	Explore the Bible (LifeWay); other short-term studies	Mildred Gray 770-595-4039; graymd@windstream.net	Relay for Life; Food Pantry; Cystic Fibrosis Foundation; Children's Home in Peru; Liberia Missions; Turkey Can Run; Disaster Relief; Road Clean-Up; Meals on Wheels; Adopting a Christmas family	Annual Christmas Party; Class dinners; desire to do more	<i>"We are fun-loving"</i> <i>"We are a group who deeply cares for each other and the community"</i> <i>"We love music"</i>
<b>Adult III</b>	50's+ (Couples and Singles)	Explore the Bible (Lifeway)	Joe Morgan 727-488-4100; joe.morgan@xmorgan.com	Food Pantry; The ARK; The Treehouse; Peru Missions; Meals on Wheels; Hope Resources; Coat Closet; Backpack Ministry; Mayor's Motorcade; Bereavement meals; Individual benevolence; Maintain church gardens	Dinners every 4th Thursday of the month; Annual Christmas party; occasional Sunday dinners	<i>"This class is unique because of the love shared between us"</i> <i>"We are very welcoming"</i> <i>"We like to eat together"</i>
<b>Samaritan</b>	50's+ and hoping to grow with younger members (Women)	Explore the Bible (LifeWay); other book studies	JoAnn Hickox 706-367-1583; hickox1@aol.com	Food Pantry; The ARK; Meals on Wheels; Athens Food Bank; Stephen Ministry	Quarterly lunches; annual Christmas party	<i>"We love each other and care for each other"</i> <i>"We always pray for each other"</i> <i>"We welcome others to join us"</i>
<b>Baraca</b>	50's+ and hoping to grow with younger members (Men)	Explore the Bible (LifeWay)	Vernon Duvall 706-340-4032 bduvall1935@windstream.net	Meals on Wheels; Food Pantry; DFACS	Annual Christmas Party; Holiday dinners; Breakfasts	<i>"We have great class discussions"</i> <i>"We have built very close friendships"</i> <i>"We would like to grow with younger men"</i>

# Visit a Class TODAY!

(Ushers and Greeters are available to help you navigate our church campus)



## Key to Map

Sunday School Class Name	Location
Nursery	Main Bldg. First Floor (Rooms #1)
2 1/2-3 Year Olds	Main Bldg. First Floor (Preschool Area)
Pre-K thru Kindergarten	Main Bldg. First Floor (Preschool Area)
1st- 5th Grade	Main Bldg. Second Floor (Children's Suite)
6th- 12th Grade	Body Shop (Room #2)
Adult I	Office Suite (Room #3)
Adult II	Annex (Room #4)
Adult III	Fellowship Hall (Room #5)
24:15 (Joshua)	Main Bldg. First Floor (Room #6)
Baraca	Main Bldg. Second Floor (Room #7)
Samaritan	Main Bldg. Second Floor (Room #8)
Open Door	Main Bldg. Second Floor (Library)

Sunday School



it's for life!

**Adult Classes**

Sundays 9:40-10:30 a.m.



First Baptist Church  
**JEFFERSON**  
*It's all about relationships.*